

Abtex

— Corporation —

A Deburring Technology Company

Dedicated to
deburring excellence





Where machine meets brush
and brush meets burr,
Abtex dominates.

Since 1980, manufacturers worldwide have relied on Abtex as their primary defense against the burrs in cut metal edges that can quickly disable expensive engines and other machinery and that create safety hazards that sometimes lead to debilitating liability lawsuits.

The company has earned its reputation through decades of developing innovative machine/brush solutions for customers in automotive, aerospace, military, industrial, medical, metal-finishing, and many other industries.

Deburring is Abtex's only business.

Abtex custom-designs brushes only for deburring – not for painting, sweeping or basting.

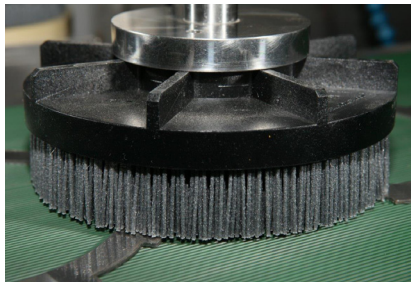
Whether the deburring challenge involves cold-rolled steel, stainless steel, aluminum or powdered metal, Abtex's solutions offer unparalleled results.

Visionary Machine Design

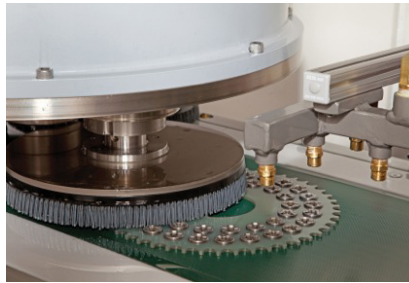
Abtex brushes are the world's best answer to difficult deburring problems. But when coupled with a custom-designed machine, engineered to take full advantage of the machine/brush interface, the deburring experience becomes an important element of your operation's quality control systems.

Abtex has developed machine-based solutions – often using its proprietary, planetary-head design – for the deburring of aluminum extrusions, ground powder metal and fine blanking parts, and for powder metal parts in the “green” stage of manufacturing, when they are easier and less expensive to deburr than after the sintering process.

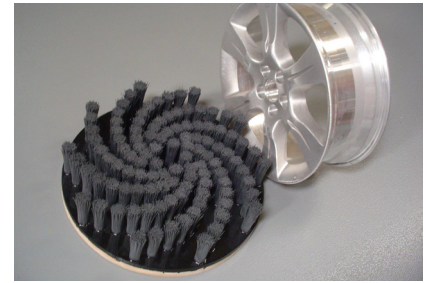
Abtex's brushes eliminate every burr while never affecting the geometry of the part itself. The company's machines are designed to guide, position and manipulate Abtex-designed brushes for maximum efficiency.



Abtex fine blanking capabilities are unparalleled. The Tri-Ten planetary head produces optimal brushing action in through-feed applications.



For powder metal applications, either green or sintered, parts are flipped automatically for streamlined deburring – both sides in a single pass!

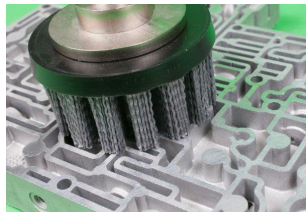


Abtex quickly eliminates burrs even on oddly shaped aluminum extrusions, regardless of part size.

What people are saying

“We needed a deburring system to integrate into our line for a pack-out system. It had to be able to deburr multiple surfaces and we wanted it to compensate for brush wear. Abtex’s applications engineers were extremely responsive in their deburring sample parts and in their interface with our customer. I was impressed with their attention to detail and the thought that went into the unit. We and our Fortune 500 customer would go back to Abtex in a minute.”

- Dan Schwab, Distech Systems



Total Systems Solutions

The Abtex Systems Group helps customers achieve even greater deburring efficiency by applying its expertise in vision, robotics, material handling and conveyance to solve customer problems – end-to-end efficiency in everything that comes before and after deburring.

The Systems Group was formalized in 2014 with the company’s acquisition of Nihmble Systems, which had earned a reputation for excellence by modernizing and streamlining the operations of companies like Corning Inc., Thermo Fisher Scientific, General Electric, Motion Industries, TRW, CooperVision, and Alstom Signaling.

With Abtex as your deburring partner, you ensure that your manufacturing operation is both efficient and cost-effective, and that your products maintain the quality you build into them.

Benefits of Abtex Deburring Solutions

- More than three decades of developing innovative deburring solutions
- A wide range of custom-engineered and manufactured abrasive nylon brushes, including Disc, Hex-Drive, Fineblanking and End brushes as well as Radial Wheel, Tube & Pipe and Honing brushes and accessories
- Complete, customized systems for powder metal, fine blanking, aluminum and green part processing as well as in-machine deburring
- Superior elastic-bonded abrasives for finishing and polishing, including peripheral wheels, polishing blocks, ring cones and mounted points – all supplied through Abtex’s strategic alliance with Artifex, Germany’s leading provider of metal finishing solutions
- Streamlined integration of deburring into existing operations through the use of vision systems, robotics, material handling and conveyance systems
- The ability to solve even your most difficult deburring problem



Like to try us out on your toughest deburring challenge?

The Abtex Application Lab is a hotbed of creative activity, where Abtex engineers often work side-by-side with prospects and customers to solve particularly tough deburring problems. Some of our best products have resulted from these challenges.

Got a tough deburring problem? Think we might be able to help? Call Larry Johnson toll-free at 888-662-2839 or e-mail him at sales@abtex.com.

The best way to get to know us is to see what we can do specifically for your business.

Abtex Corp.: Dedicated to deburring excellence since 1980.

Abtex
— Corporation —

A Deburring Technology Company