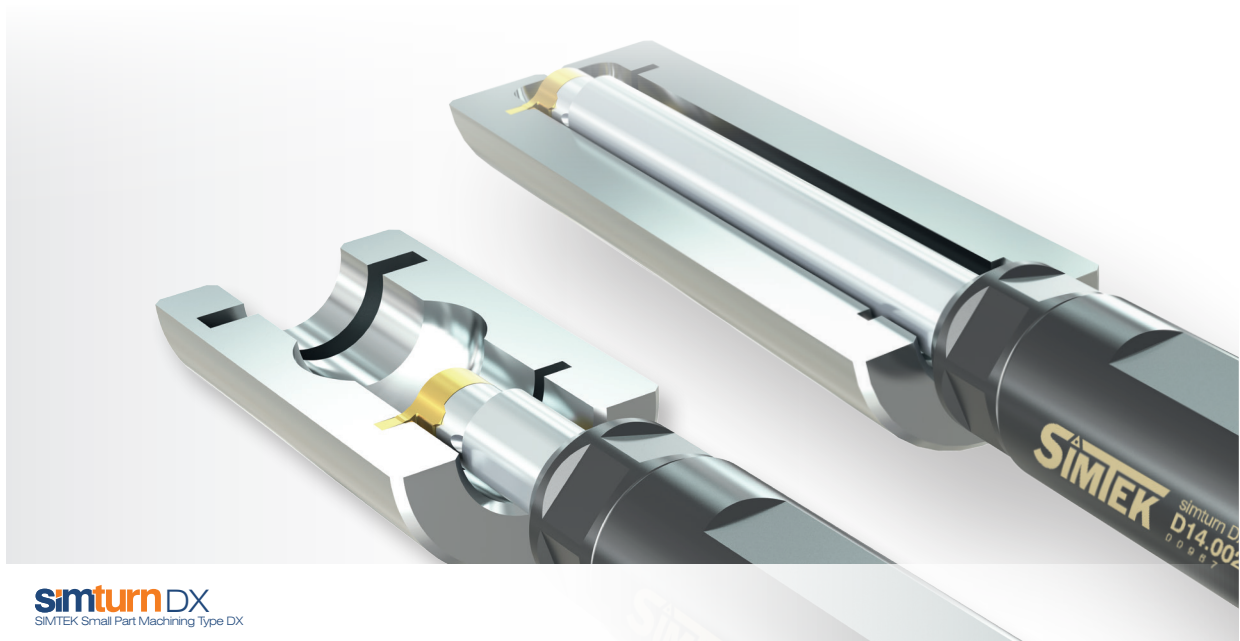


Length adjustable simturn DX - toolholders for internal applications!



Thanks to their adjustable length, these simturnDX - toolholders are ideal for use in various components - especially in small series production. Due to the patented ME-clamping system*, these toolholders can be precisely and steplessly adjusted in length as required and offer highest stability. These toolholders can therefore reduce the need to purchase new ones when starting a new component series!

- Usable lengths of the size D10: 31,0 mm – 87,5 mm
- Usable lengths of the size D14: 42,0 mm – 124,0 mm
- For use of all inserts of the sizes D10 and D14
- Patented ME clamping system* for highest stability and precision

* European Patent No. 2 992 988



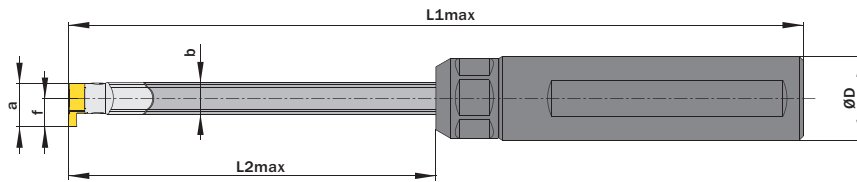
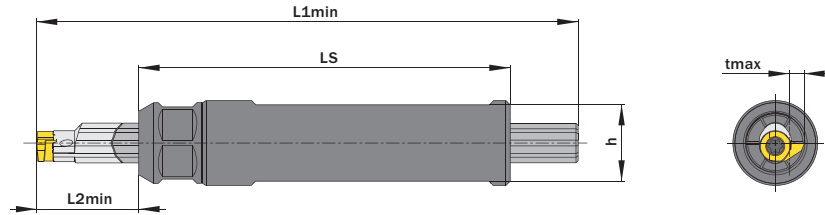
Please scan the QR-code for the catalog pages or visit:
<https://www.simtek.com>

Length Adjustable Toolholder, Internal Applications, Round Shank, „ME“

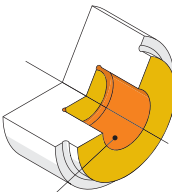
Steel round shank, equipped with our ME-clamping system. The ME-system provides force-fitted clamping along with higher precision and stability. Infinitely variable length can be realized as required.

Please note the information in the general catalog
MASTER (Page 201)

Scan QR-Code Or Visit www.simtek.info/cp/1311



Dimensions „a“, „f“ and „tmax“ depend on used carbide inserts.



- Mainly designed for these surfaces
- Also possible depending on insert type

Drawing shows: D10.0020.24.087 ME

ØD ^{g6}	L2min	L2max	Part number	Webcode www.simtek.com/webcode	b	h	LS ±0,5	L1min	L1max	Standard screw nut	Connectcode www.simtek.com/code
mm	mm	mm			mm	mm	mm	mm	mm		
▼ ØD = 19,05 mm											
19,05	31,0	87,5	D10.0.750.24.087 ME	A5XH	7,5	17,0	87,5	127,5	175,0	A00.K.19.15.138	D10
19,05	42,0	124,0	D14.0.750.25.124 ME	A5XK	9,5	17,0	87,5	164,0	211,5	A00.K.19.15.138	D14
▼ ØD = 20,0 mm											
20,0	31,0	87,5	D10.0020.24.087 ME	A2ZA	7,5	18,0	87,5	127,5	175,0	A00.K.19.15.138	D10
20,0	42,0	124,0	D14.0020.25.124 ME	A2ZB	9,5	18,0	90,0	164,0	214,0	A00.K.19.15.138	D14

Order example: **D10.0020.24.087 ME**