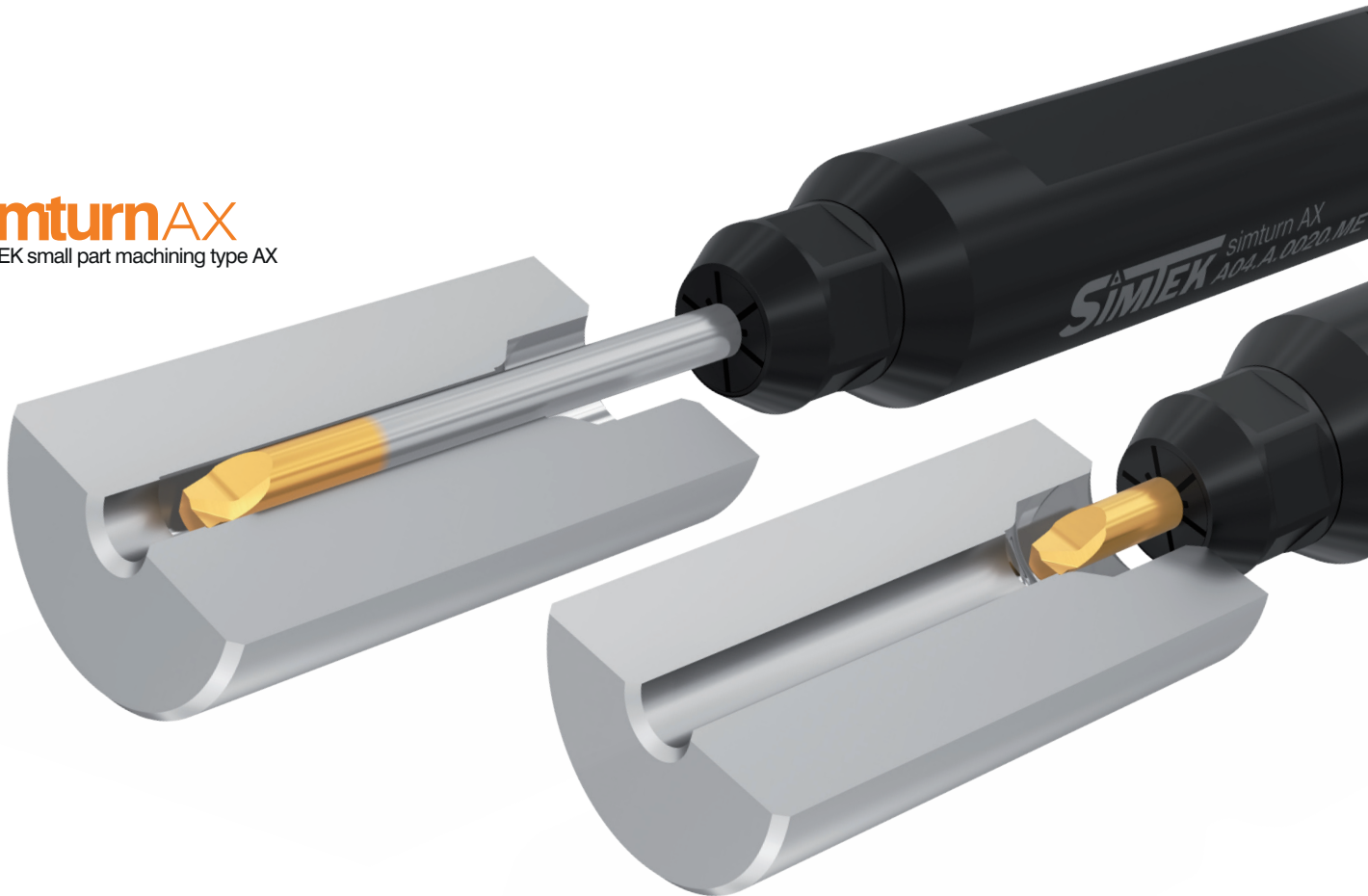


## Boring of bores starting at $\varnothing$ 4,7 mm with a variable adjustable useable length!

**simturn AX**  
SIMTEK small part machining type AX



Variability is one of the success factors of any production. The ability to react quickly and at the same time cost-effectively to new requirements is therefore taking on an increasingly important role. With the new length-adjustable tools for the product group simturn AX, SIMTEK offers an ideal solution to meet these requirements. Thanks to the patented ME-clamping system\*, this tool can be precisely and steplessly adjusted in length as required and offers highest stability for boring applications in bores as of  $\varnothing$  4,7 mm. As a result, this versatile tool can reduce the need for a new purchase at the start of a new components series!

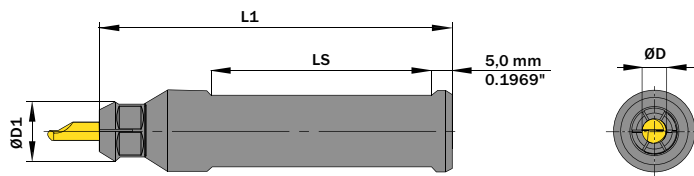
\*European Patent No. 2 992 988



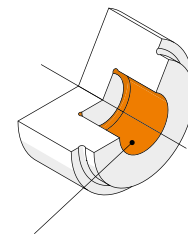
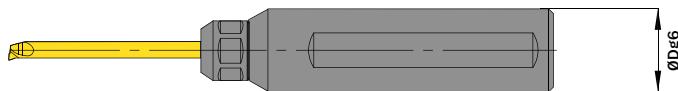
You can find more information on simturn AX by scanning the QR-code or by visiting us on [www.simtek.com](http://www.simtek.com).

## Steel round shank with ME-clamping system for cutting inserts with a variable useable length.

Steel round shank with innovative ME-clamping system for the stable and infinitely adjustment of the useable length of suitable cutting inserts.



Please note, that these tools can be used with tools with the Connectcode A04.A only.



Mainly designed for these surfaces

Drawing shows: A04.A.0020.ME ST

ØD	ØDg6	Part number	Webcode www.simtek.com/webcode	ØD1	L1	Ls	Standard screw nut	Connectcode www.simtek.com/ccode
mm	mm			mm	mm	mm		
4,0	20,0	A04.A.0020.ME ST	BEAG	14,5	88,0	55,0	A00.K.14.12.88	A04.A

Order example: A04.A.0020.ME ST

**simturnAX**  
SIMTEK small part machining type AX

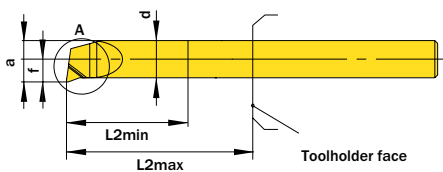
Cutting inserts with Connectcode A04.A can be found [here](#).

## Boring of bores starting at Ø 4,7 mm with a variable adjustable useable length.

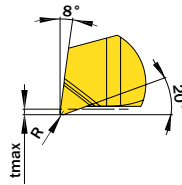
Cutting insert with a variable adjustable useable length between 13,0 mm and 48,0 mm for the boring of bores starting at Ø 4,7 mm.



Please note, that these tools can be used with tools with the Connectcode A04.A only.



Detail A (10 : 1)



Drawing shows: A04.A.18.48.47.15 YR

ØD	L2max	ØDmin (min. bore)	R	Part number	Webcode www.simtek.com/webcode	Our first choice	a	d	f	L2min	tmax	Connectcode www.simtek.com/code
mm	mm	mm	mm			P K M N S	mm	mm	mm	mm	mm	
4,0	48,0	4,7	0,15	<b>A04.A.18.48.47.15 YR</b>	BEAJ	X800 X400	4,45	4,0	2,45	13,0	0,3	A04.A

Order example: **A04.A.18.48.47.15 YR X800** (R = Right hand version, X800 = Grade)

**simturnAX**  
SIMTEK small part machining type AX

Toolholder with Connectcode A04.A can be found [here](#).